



Janesville Kiwanis

Janesville Noon Kiwanis • P.O. Box 51 • Janesville, WI 53547

February 5, 2004, Vol. XXI, No. 19

'03-'04 BOARD

PRESIDENT

Jim Leeser
752-8003

PRESIDENT ELECT

Tom Waller
758-1229

PAST PRESIDENT

Kevin Apfel
754-4444

SECRETARY

Will Parks Ed Pulliam
755-8202 752-8322

TREASURER

Eric Scherdell
752-5835

DIRECTORS

Penny Cook '04
Dr. Kevin O'Leary '04
Stu Charland '05
Judi Huseth '05
Robbi Seales '05
Floyd Kowal '06
Andy Frelich '06
Ed Pulliam '06

COMMITTEE CHAIRS

PANCAKE DAY

Jim Stoa

PROGRAMS

Tom Waller

MEMBERSHIP

Angela Bernhardt

SPIRITUAL AIMS

Dale Halverson

INTERCLUBS

Floyd Kowal

BINGO

Dr. Kevin O'Leary

SOCIAL EVENTS

Irene Stewart

TERRIFIC KIDS

Nancy Verhoeven

IDD

Tom Waller

PARKER KEY CLUB

Kevin Apfel

CRAIG KEY CLUB

Jim Leeser

Judge's Candidate Forum



A forum of 5 judicial candidates were on hand to present their views and answer questions. Among them were: Alan Bates, William Hayes, Barbara McCrory, Kimberly Vele and Jim Wickem.

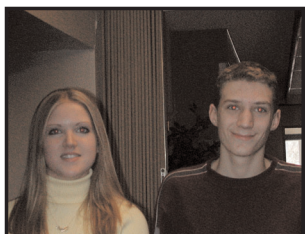
Upcoming Programs

February 12Valentines Luncheon
February 19TBA
February 26New Member Induction

Pancake Day Placemat Ad Deadline HAS PASSED!

The ad placemat deadline has passed. Although the placemat has not yet been printed, it will be soon. If you are still making calls we need to know. Call Andy (756-0275) or Jim (754-3696) if you are still trying to contact some of your accounts.

ATTENDANCE: Another crowd of 47 members, guests and students was on hand for today's jude candidate forum. A few faces we haven't seen in a while were good to see once again - Greg Addie and Curt Terry.



STUDENTS OF THE MONTH: Sarah Steenblock and Michael Neuenschwander of Parker will be joining us this month. Please introduce yourself to them.



CRAIG KEY CLUB: None in attendance today.

PARKER KEY CLUB: Jessica Sullivan, right, made a visit today. Jess will be attending the MidWinter Conference along with our delegation.

ACE OF HEARTS: Dave O'Leary nervously pulled the Queen of Spades from the deck. 19 cards left and a pot of \$1420 to be split.



ANNOUNCEMENTS:

MID WINTER CONFERENCE: A contingent of 6 will represent us at this event. Still looking for delegates for this summer's convention in St. Louis. Andy Frelich is the only one scheduled at this point.

BINGO: Next Thursday, 2/12. Contact Dr. Kevin O'Leary if you can volunteer. 7-8pm at Rock Haven.

BLOODMOBILE COORDINATOR: Pastor Judi Huseth has offered to chair our Bloodmobile efforts. Anyone else wishing to help out may contact Judi.

MEMBERSHIP: Angela Bernhardt has agreed to take the challenge of Membership Chairperson. If you'd like to help Angela, call her or let her know at a weekly meeting.

HAPPY DOLLARS:

Andy Frelich happy to be out of customer ticket packs. That means we are selling well!

Will Parks happy that the new members like Dan Krueger, Angela Berhardt and Laura Feit are bringing new businesses to the placemat.

Jim Holmstrom Happy that his son, Curtis, will soon be back from Iraq.

Bob Elliot had a "Thank You" for the volunteers on the Christmas Light Tour.

A Fond Farewell

Dale Halverson was saddened to announce to the club that member Charlie Weber passed away in Florida. Charlie has been a member many years and will be sadly missed.

Pancake Day Saturday, March 13, 2004

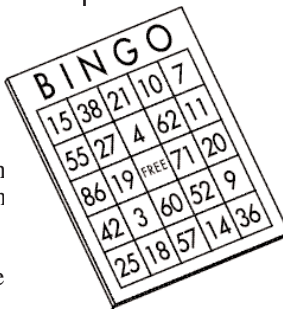


Sponsor ads are need in ASAP!

Turn your placemat information in at our

meeting or contact Dr. Jim Damrow or Andy Frelich. Money can also be turned in at the meeting to Jim, Andy or Will.

A work detail sign-up sheet is going around. Please help fill in the gaps. Call Jim Damrow if you cannot make the meeting to sign up.



at Rock Haven February 12, second Thursday of each month) to play 'GO with the residents. From 7-8pm you'll have a great time there handing out dimes or calling numbers. Help is always needed. Contact Dr. Kevin O'Leary to volunteer.

